

IP over TDM Gateway



Model CL-T1/E1

CL-T1/E1 is a broadband interface converter device which converts electrical and protocol conversion between data from Fractional E1/T1 to Ethernet 10/100BaseT interface with different E1/T1 configurations. CL-T1/E1 supports Fractional E1/T1 transparent and framed modes

with different line codes plus line build-out (LBO) capability. This provides for the user with various Ethernet LAN services (Video Conferencing, Routing, etc.) through a single E1/T1 connection.

Features

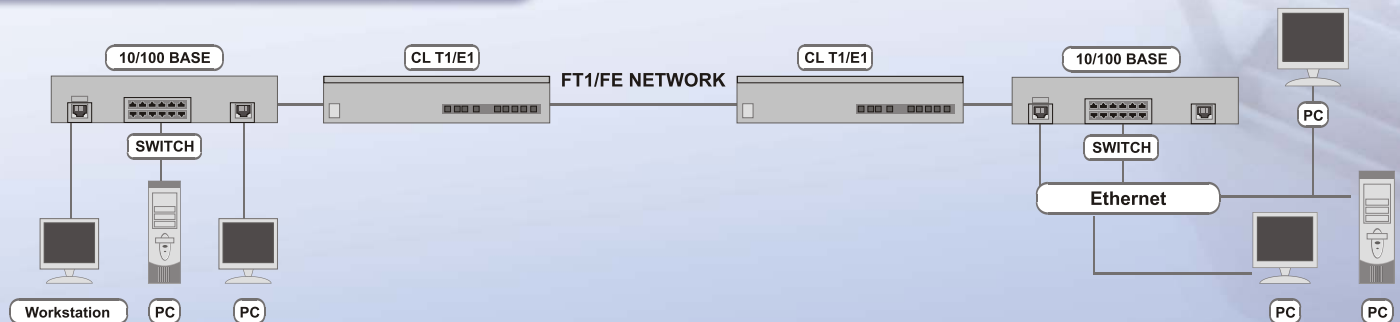
- Support Fractional E1/T1 Transparent and Framed modes
- Bridge capabilities for Ethernet 10/100BASE-T interface
- IP Over SDH/PDH/ATM Network
- 6 LEDs for status monitoring
- DIP switches for configurations/settings

Model Selection

CL-T1/E1

IP over TDM Gateway

Example Application



Specifications

Features	Support Fractional E1/T1 Transparent and Framed modes Bridge capabilities for Ethernet 10/100BASE-T interface IP Over SDH/PDH/ATM Network	6 LEDs for status monitoring DIP switches for configurations/settings Desktop and 19" rack (option)
E1 Interfaces	Line Interface: ITU-T G.703, G.704 /ETSI ETR 152 standard Line Rate: 2.048 Mbps +/- 50ppm Line Code: HDB3, AMI	Frame Format: Framed, Unframed Line Impedance: 75/120 ohms Connectors: BNC, RJ-48C
T1 Interfaces	Line Interface: ANSI T1.403, ITU-T G.703, G.704 Line Rate: 1.544 Mbps +/- 32ppm Line Code: AMI, B8ZS	Frame Format: ESF, SF, and Unframed Line Impedance: 100 ohms Connectors: RJ-48C
Ethernet Interfaces	High performance bridge for Ethernet extension 10/100BASE-T Ethernet interface Fully compatible with IEEE802.3 , 802.3u	Automatic MDIX function Connectors: RJ-45
Status LED	POWER: G1200S power ready E1: E1 interface status T1: T1 interface status	LOS: Signal Loss Indicator on E1/T1 interface 10/100M: LAN port speed LAN: LAN port Link & Data transport status
Dimensions	260mm x 151mm x 44 mm	
Operating Environment	Humidity: 5% to 95% non - condensing Temperature: 0°C to +50°C	
Regulatory Compliance	CE, FCC Rules Part 15 Class A	