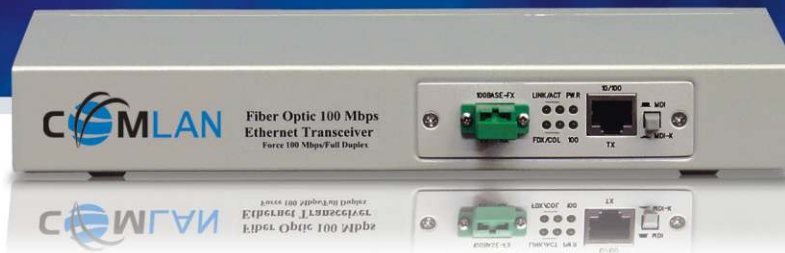


# Fiber optic 10/100Mbps Ethernet Transceiver



Model **CL-200**

The rack-mountable CL-200 switch is ideal for operating any size client/server network and is designed for bandwidth-constrained workgroups, which require faster speed connections. This product will increase the performance of your network by bringing full Ethernet bandwidth to individual workgroups and/or clients, which will eliminate the need for all stations to share the bandwidth of a single network.

100 Mbps Fast Ethernet capability of these switches eliminates bottlenecks in connection to servers, and can link your existing 10 Mbps workgroups to a 100 Mbps Fast Ethernet backbone.

## Features

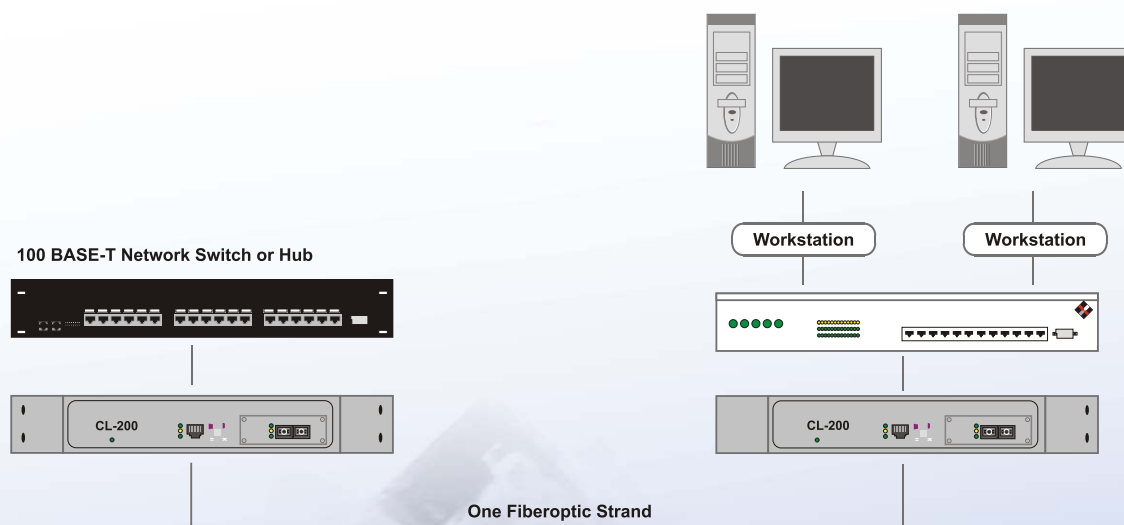
- 10/100 Auto-Sensing/Force Full Duplex
- 2 x RJ-45 ports
- 1 or 2 FX 100 Mbps fiber port
- Provide full wire-rate 10/100 Mbps switch ports for greater network performance
- Supports "Store and Forward" switching architecture
- Connect 10 Mbps, 100 Mbps, Half and Full Duplex simultaneously
- 4K MAC address entries per port
- Two-way (incoming and outgoing) address learning supported for each port
- 170 full-size data packet buffer for 100 Mbps port
- Routing decision less than 0.5 u sec
- Filtering and forwarding rate - 14880 packets per second for 10 Mbps ports, 148800 per second for 100 Mbps ports
- Plug-n-Play Ethernet & Fast Ethernet Switch
- Easy migration from 10 Mbps to 100 Mbps
- IEEE 802.3, 802.3u compliant
- Guaranteed Switch performance and hardware compatibility with other switches, hubs and adapters

## Model Selection

<b>CL-200-1S-SCA-40</b>	10/100 Fiber optic Ethernet Switch, 2 Port, 1 Fiber, SC/APC Connector, 40km
<b>CL-200-1S-SCA-80</b>	10/100 Fiber optic Ethernet Switch, 2 Port, 1 Fiber, SC/APC Connector, 80km
<b>CL-200-2S-SCA-60</b>	10/100 Fiber optic Ethernet Switch, 2 Port, 2 Fiber, SC/APC Connector, 60km
<b>CL-200-2S-SCA-110</b>	10/100 Fiber optic Ethernet Switch, 2 Port, 2 Fiber, SC/APC Connector, 110km
<b>CL-200-1M-SC-2</b>	10/100 Fiber optic Ethernet Switch, 2 Port, 1 Fiber, SC/PC Connector, 2km

Other Connectors and Distances Available Upon Request

## Example Application



## Specifications

<b>Standards</b>	IEEE 802.3 Ethernet IEEE 802.3u Fast Ethernet
<b>Connection Ports</b>	1 x UTP Port & 1 x Fiber Port 1 x RJ-45 Dual Speed UTP port and 1 x 100BASE-FX Fiber port
<b>Network Media</b>	10BASE-TX: UTP category 3 or better 100BASE-TX: UTP category 5 100BASE-FX: SC 62.5/125u or 9/125u fiber cable
<b>Crossover Push Button</b>	1 crossover button for the UTP port
<b>LED Indicators</b>	Power, Link/Activity, Full or Half Duplex/Collision, 10/100 Mbps
<b>Dimensions</b>	260mm x 145mm x 44mm
<b>Environment</b>	Operating temperature: 0°C to 40°C Storage temperature: -20°C to 70°C Operating humidity: 10% to 90% RH Storage humidity: 5% to 90% RH
<b>Input Power Requirements</b>	Voltage: 110/240V Auto-sense Internal Power
<b>Regulatory Compliance</b>	FCC Part 15 Class A, CE, UL, CUL, TUV